

# MULTI-ZONE HOT WATER TCU & "QUICK CHANGE" SLIDING TRAYS



6-Zone Vertical Temperature  
Control Unit



2-Zone Unit with Removable  
Sliding Trays

## "QUICK CHANGE" MULTI-ZONE HOT WATER UNITS & BUDZAR'S EXCLUSIVE SLIDING TRAY

BTU Multi-Zone Hot Water Systems provide up to eight independent zones, of temperature control, each with its own each own controls, pumps, heaters and cooling modes.

With the smallest footprint possible, the Multi-Zone units are perfect for processes which require controlling more than one temperature and floor space is at a premium. The sliding tray design eliminates maintenance down time. Should a component fail, the process, cooling and electricity connections are disconnected, the failing component is replaced all under one minute without stopping the process.

The replaced component is either repaired on site or the complete tray may be returned to Budzar for an overnight restoration to factory specifications

Budzar also designs and manufactures specialized equipment for non-standard applications. Our engineers have extensive experience in process chilling and heating applications for such industries as: chemicals, petroleum, plastics, rubber, paper, power, steel, food, and pharmaceuticals. We take the time to understand your current and future needs and design a solution targeted at high quality and fast payback.

 **BUDZAR**  
INDUSTRIES, INC.

engineering  
**PRECISION**

### **EXCELLENT RETURN ON INVESTMENT**

- Each Budzar unit is designed to maximize the productivity of your process. Budzar quality and reliability provide excellent value for each dollar invested
- Reliable temperature control improves process consistency, reduces scrap, speeds start-up and increases production rates.

### **LOW-COST, SIMPLE OPERATION AND MAINTENANCE**

- Each zone is controlled by a "self-tuning" PIC microprocessor controller. The controller has a five year warranty
- "At-a-glance" indicator lights display important operating conditions
- High temperature (300°F) EPDM mechanical seal prevents pump seal failure
- Individual heater case continuous air vents prevent heater burn-out
- Sliding trays simplify maintenance
- Overnight delivery of replacement trays
- Available Closed Loop configurations for temperature up to 250°F and Direct Injection configurations for temperature up to 210°F
- System and operator are protected by low-pressure safety switch and relief valve
- Optional modulating cooling control valve eliminates water "hammer" and solenoid failure

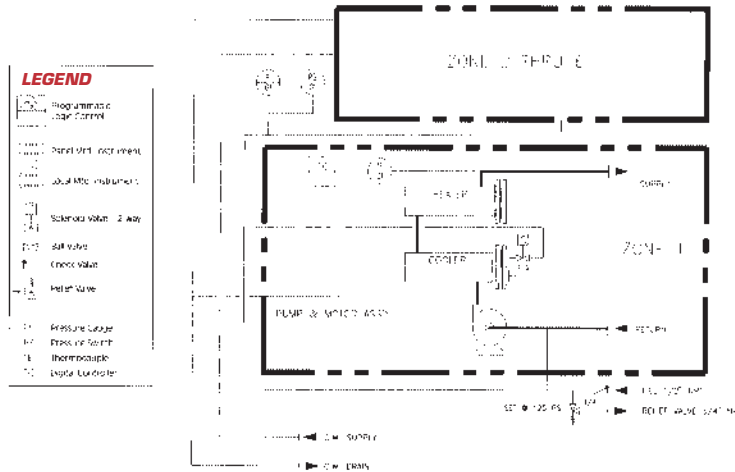
### **QUICK AND EASY INSTALLATION**

- Single point connections for all utilities
- Minimal floor space design makes placement easy
- All units are factory tested prior to shipment



process  
**TEMPERATURE**  
control

# MULTI-ZONE HOT WATER



## MULTI-ZONE HOT WATER

	Model <sup>1</sup>	Heater kW <sup>2</sup>	Motor HP	Cooling Valve Size	Voltage	Per Zone GPM @ 30 PSI <sup>3</sup>
Direct Injection Solenoid Valve Cooling 9kw Heater	2WT-9-.75-.25-DSM-X	9	.75	.25	460	20
	2WT-9-1-.25-DSM-X	9	1	.25	460	30
	2WT-9-1.5-.25-DSM-X	9	1.5	.25	460	40
	2WT-9-2-.5-DSM-X	9	2	.5	460	60
	2WT-9-3-.5-DSM-X	9	3	.5	460	100
Direct Injection Modulating Valve Cooling 9kw Heater	2WT-9-.75-.25-DMM-X	9	.75	.25	460	20
	2WT-9-1-.25-DMM-X	9	1	.25	460	30
	2WT-9-1.5-.25-DMM-X	9	1.5	.25	460	40
	2WT-9-2-.5-DMM-X	9	2	.5	460	60
	2WT-9-3-.5-DMM-X	9	3	.5	460	100
Closed-Loop Solenoid Valve Cooling 9kw Heater	2WT-9-.75-.25-CSM-X	9	.75	.25	460	20
	2WT-9-1-.25-CSM-X	9	1	.25	460	30
	2WT-9-1.5-.25-CSM-X	9	1.5	.25	460	40
	2WT-9-2-.5-CSM-X	9	2	.5	460	60
	2WT-9-3-.5-CSM-X	9	3	.5	460	100
Closed-Loop Modulating Valve Cooling 9kw Heater	2WT-9-.75-.25-CMM-X	9	.75	.25	460	20
	2WT-9-1-.25-CMM-X	9	1	.25	460	30
	2WT-9-1.5-.25-CMM-X	9	1.5	.25	460	40
	2WT-9-2-.5-CMM-X	9	2	.5	460	60
	2WT-9-3-.5-CMM-X	9	3	.5	460	100

1 - "X" denotes no Tray. Change the suffix to "T" to denote Modular trays

2 - 12,18,24,36kw per zone available

3 - 50 psi optional

### Options

#### Electric Heater Upgrade

- 12kw, 18kw, 24kw 36 kw

#### Sliding Trays

- Remove a zone tray and replace it with a spare in less than one minute while the TCU is running

#### Modulating Cooling Control Valve

- All Multi-Zone TCUs come standard with solenoid cooling control valves. Modulating valves improve temperature control and extend the life of the valve

#### Closed-Loop Cooling Heat Exchanger

- A copper tube heat exchanger separates the fluid circulating through the process from your cooling water source. A good idea if your source cooling water is dirty or if you need to run your process at temperatures above 212°F

#### Flow Switch

- All Multi-Zone TCUs come standard with a Pressure Switch that protects against pump seal failure and heater burn-out by turning off the pump and heater when there is a loss of pump fill pressure. A flow switch adds further protection against pump seal failure and heater burn-out by turning off the pump and heater when there is a loss of flow

#### Pump Seal Flush

- Extends the life of the pump seal by continuously flushing the pump seal with process water. This option is NOT recommended for dirty water

#### Electrical Cord & Plug

- 15' electrical cord and plug. Plug options include all NEMA Twist-Lock Plugs

- Devices: L14 thru 22-20P thru 30P

#### Voltages

- 460/3/60, 230/3/60, 575/3/60, 380/3/50, 415/3/50

Budzar Industries reserves the right to discontinue or change specifications without notice, consistent with sound engineering practice and current industrial standards.



38241 Willoughby Pkwy., Willoughby, Ohio 44094-7582  
 (440) 918-0505 • Fax (440) 918-0606 / 918-0707  
 www.budzar.com • E-mail: sales@budzar.com



Bulletin #11  
11/03